

Corporate Profile

TransWeb Briefs

— Takeshi Maesawa, President —

When I began my professional career in 1994, I was just an ambitious young guy who loved cars. It was 2001 a wonderful opportunity came to me to establish my own company, TransWeb. Since then we have been working ourselves to the bone together, with whom I was and still am able to share the passion for excellence. What I always have in mind is “How could we make our clients happy and satisfied?”

The answers are multiple; measures to achieve the target, passion and dedication, plus something more is desperately needed to exceed our customer’s expectation.

All TransWeb trucks and transporters are painted in white so as not to cause impacts on our customer’s brand image. We use many Swedish Scania trucks to make our presence more impressive. Development of purpose-built vehicles is to improve logistic efficiency.

“Value-added Services Only Achievable by Making Ourselves Different”.

TransWeb commits itself to going forward through creative power and passion.



TransWeb Network

Headquarters/ Tokyo Office	8-5 Misawa, Tomisato-shi, Chiba-ken 286-0225 ☎+81(0)476-91-4800
Hokkaido Office	758-67 Bibi, Chitose-shi, Hokkaido 066-0012 ☎+81(0)123-25-5951
Sendai Office	1-111-1 Gamo, Miyagino-ku, Sendai-shi, Miyagi-ken 983-0002 ☎+81(0)223-49-5586
Nagoya Office	19-1 Aza Meiwari, Jinnoshinden-cho, Toyohashi-shi, Aichi-ken 441-8077 ☎+81(0)532-34-4555
Osaka Office	22-30 Aobaokakita, Suita-shi, Osaka 565-0801 ☎+81(0)6-6878-0011
Kyusyu Office	C202 Maison de Brian 42-2 Kamahara, Yame-shi, Fukuoka-ken 834-0064 ☎+81(0)943-22-8925
Inzai PDI Center	4-4 Wakahagi, Inzai-shi, Chiba-ken 270-1609 ☎+81(0)476-80-3333
Inzai Second PDI Center	4-3-3 Wakahagi, Inzai-shi, Chiba-ken 270-1609 ☎+81(0)476-33-6364
Narita PDI Center	473-1 Nanae, Tomisato-shi, Chiba-ken 286-0221 ☎+81(0)476-90-3400
Container Port	648-32 Nanae, Tomisato-shi, Chiba-ken 286-0221 ☎+81(0)476-85-4911

Corporate Profile

Company Name	TRANSWEB CO.,LTD.
Headquarters	8-5 Misawa, Tomisato-shi, Chiba-ken, 286-0225 Japan
Establishment	January 2001
Capital	20,000,000 yen
Sales	5,429,000,000 yen (Fiscal 2022)
President	Takeshi Maesawa
Employees	330
Vehicles in operation	224 (including trailers)
Major Clients	– Ferrari Japan K.K. – Maserati Japan.,Ltd. – Porsche Japan K.K. – Aston Martin Japan Limited – McLaren Automotive Asia Pte.,Ltd. – Tokyo Broadcasting System Television, Inc. and over 300 companies and organizations.



Charter Operations

Quality begins with ensuring security and safety of our customer's items.

TransWeb utilizes the oversized transporters to guarantee unique transporting security and safety of the vehicles and other important items of our clients. The transporters featuring the fully-covered cargo areas could be a perfect solution if you seek for enhanced transportation security and safety. They offer an excellent protection against elements and other potential hazards including less harmful ones like curious eyes. Dramatic upgrades in security and safety are thus promised.

TransWeb's basic policy for the charter business operations goes as follows: One dedicated transporter should be responsible for the entire movement of the vehicle/item transported from the point of origin to the final destination. Uniqueness of our policy becomes quite distinguishable when compared with those of other transportation companies, which often commission different transporters for collection and delivery for their efficiency. The vehicles and/or items have to be moved from one transporter to another, creating unnecessary risk of damaging during the changeover. One question: Is it right to exposing the customer's property to additional risk? The answer is crystal clear and obvious. The use of one dedicated transporter with no changeover results in the movement in the shortest possible time with the highest security and safety conceivable. It lays the solid foundation of TransWeb quality — the shortest in collection/delivery, the lowest potential of damaging the customer's property and the highest in reliability and trustworthiness of the brand.

Our transporters are painted in white in order not to cause impacts on the brand image of our customers. Speaking of white, our drivers and supporting members wear white fine-fabric gloves and use disposable seat covers when handling customer's cars. The color symbolizes our utmost care and delicacy to the customer's property.

TransWeb is always on the run when it comes to upgraded quality, safety and security of our client's properties.



White gloves are the "must have" of our drivers and supporting staff.



All the transporters are painted in white.



Perfect protection: Disposable seat covers and floor mats.

New Vehicle Operations

From one-off operation to fleet transport of premium luxury imported vehicles.

The transport of the new vehicles imported from abroad is another strong pillar of our business operations. In addition to the fully-covered transporters, open-top carrier cars are also used when the efficiency is set as the highest priority. Our commitment to quality, however, remains unchanged. The identical attention to that of the charter operations is acceptable. The drivers and supporting members wear white gloves and uses disposable seat covers to keep the delicate interior trims of the vehicle intact during loading/unloading processes. Our "white-out" strategy goes to the open-top carrier cars. The pure white background always remains neutral to the corporate/brand image of our customer.

The oversized and closed transporter takes the responsibility of delivering the vehicles to the dealer network. It provides the higher level of security thanks to the fully-covered configuration. It is thus the least likely that vehicles onboard would be damaged by unauthorized party. Our latest transporter accommodates four vehicles with ease even if they are high-roof SUVs. TransWeb is entrusted by many automotive brands to transporting of new vehicles. The more achievements and experiences we gain, the greater the demand arises. We are taking the challenge in a positive manner and striving for exceeding our customer's expectation.



Our latest-generation open-top transporter. As is the case of the enclosed version, it is painted beautifully in white, carrying five G-segment passenger cars.



All the areas calling for caution are highlighted in bright orange. This color marking makes everyone attentive to the possible risk.



Safety and security are the priority number one! The highest possible care and attention are required during loading and unloading processes, in which the occurrence of the accident is highly likely.



All the vehicles are tightly fixed to the transporter floor by tie-wrap belts made of special fabric.



Motorsport Operations



Communications with team members are the important tool (Team ARTA).



A special BTO transporter does not only accommodate tools and equipment but team members (Team ARTA).



Outreaching the limit of transporter: It serves as a "mobile workshop" (Michelin Tyre Japan).

Motorsport Operation is one of the core business divisions of TransWeb. We have been involved in the racing industry since our inauguration. We have offered specialist logistics services to various teams in Super GT and Super Formula Championships and Formula One Japanese Grand Prix. The racing car is a purpose-built machine and thus looks very different from the road car. It physically differs from road-going counterpart especially (or logistically we might say) in terms of with the "ultra-low" ride height. Our transporter,

which is also purpose-built, features the entirely-flat power reargate to accommodate the sporting vehicle. The all-around air suspension system is a requirement of the transporter that carries the precision mechanisms including, among others, racing engines and electronic control modules.

We at TransWeb are keeping abreast of the latest technologies for sporting requirements, going beyond the conventional boundary of the logistics specialist. We always prepare ourselves to offering the 360-degree support to racing teams eager for winning. TransWeb is an enthusiastic group of "petrol heads" (we realize that the industry is going for the future without fossil fuels though). For us, the racetrack is the field of dreams. Quite naturally, a joy of being together with the team to reach for the overall success motivates us for dynamic growth.



Event Support Operations

Supporting a wide variety of national events including concerts, theatrical performances and ballets.



Our business has gone farther than the services for the premium arena of the automotive and racing industries. TransWeb is offering the specialist services for concert and event organizers to move a wide variety of audio-visual equipment and complex stage props. The business operation is now one of the important pillars of TransWeb.

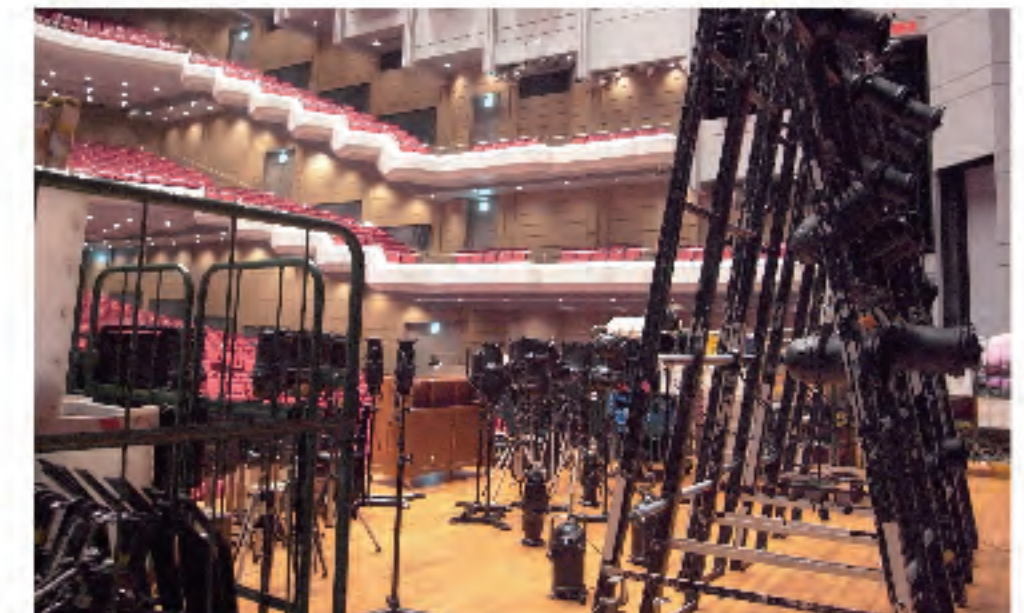
The professional audio-visual equipment is as precise and expensive as luxury vehicles and racing cars. Our profound experience in the automotive field plays a key role for secure and safe movement of the handle-with-care products. Delivering the items to the site, unloading and setting them up promptly, dismantling them after the performance and reloading them again to the transporter require highly professional operations.

Stage props, necessary for glamor of performance art, call for a wide storage space. In response to the demands, TransWeb owns a temporary warehouse that keeps them safely and securely. The comprehensive services ranging from transportation to storage are guaranteed for our customers.

One example: TransWeb is offering the fully covered services for the regular performance of a well-known ballet company, including back-stage support of installation, breakdown and temporary storage.



Close communications with event organizer are highly important.



Special attention is called for to transport complex and large-sized equipment.



Selection of the transporter depends on the dimensions of service entrance.

Air Cargo Operations

Development of transporters specially prepared for bonded cargo enables dramatic reduction in logistic costs.

An extremely large number of cargos are waiting for clearing customs outside the two international airports in the Metropolitan district everyday. In order for smooth customs, many cargos are going back and forth between Haneda and Narita Airports. The heavy traffic of those cargos are called "transportation in bond" because they are before customs.

Once the bonded transport was mainly carried out by heavy-duty lorries. Nevertheless, the lorries had an issue of limited accommodations that only accept three standard AMA containers at maximum. What is worth, the space left is effectively unusable, or ineffectively usable, for transportation purpose, deteriorating the efficiency of transport.

To offer a solution for the issue above, TransWeb has successfully developed a new carrier that allows a unique double-decker style loading of the AMA containers. With an additional carrier connected, the loading capacity increases; Five (5) AMA containers and ten (10) AKE containers can be accommodated. We have commenced the commercial use of this new vehicle. Thanks to its potential of drastic cost reduction, it naturally draws a lot of attention from a number of business sectors.



The roller mechanism over the joint between the two trailers enables push-loading from the rear-end.



The purpose-built transporter provides dual-fold advantages; more containers and reduced transportation costs.



Container

TransWeb Kicked off Unique New Challenge — Storage and Transport of Client's Beloved Vehicles —

With the "Transweb Quality" in mind, we are committed and dedicated to our customers' 100% satisfaction by transporting their vehicles in the safest and most secure manner plus added values. Now the quality unique to the company is further upgraded by commencing the new challenge — High-Quality Container Operations.

The tailor-made 20-foot containers, with the standardized exterior dimensions unchanged, feature three mobile wall panels at the front and each side. Allowing the full-open position, the wall structure significantly reduces damage to the items transported. More specifically, when loading and unloading the vehicle, the possibility of its doors and/or other components coming into contact to the panels is now kept almost zero.

The 270-degree openable configuration has another advantage. For the exhibition and event, you don't have to take the vehicle out from the container. Instead, just leaving the panels open ensures a fine view for the visitors. This offers a greater number of options for our customer. Additionally, we are planning to further upgrading the bespoke container. The planned installation of the climate control system and air purifier will regulate the temperature and humidity, guaranteeing the optimized storage condition for an extended period of time.

The "TransWeb Quality" doesn't stop here. Under the close collaboration with the specialist partner, we have prepared the tailor-made trailers featuring the innovative ideas to carry the special container. We rely on the Scania tractors as power sources because, among others, they have a lowered tractor-trailer coupling position, making the cargo floor completely flat throughout the entire length. As a result, one trailer accommodates two 20-foot containers without difficulty.

High-Quality Container Operations offer a unique opportunity to our customer, providing the three-fold advantages — storage, transportation and exhibition — without unloading your vehicle from the container. Items transported are not limited to the vehicle.

All the choices are up to you. We are looking forward to meeting and even exceeding your requirements with the "Transweb Quality".



Pre-delivery Inspection Operations

A packaged service of pre-delivery vehicle inspection and transport for upgraded satisfaction.

No vehicles imported from abroad go straight to the showroom from the customs. All the importers have their vehicles meticulously inspected to ensure approved quality before delivering them to the consumer.

Product quality inspection has two aspects. One is to inspect new automobiles in order for guaranteeing quality and reliability that they should offer. The other is to replace and/or install components and parts to meet the Japanese road traffic laws and regulations, making the vehicles road-worthy. The series of the operations are called "pre-delivery inspection", or "PDI".

In 2009 TransWeb began offering the PDI services, comprehensive operations ranging from car wash to delivery. Before loading new cars into transporters, there are a number of time- and labor-consuming tasks including various inspections, replacements, installation as well as final verification procedures if necessary.

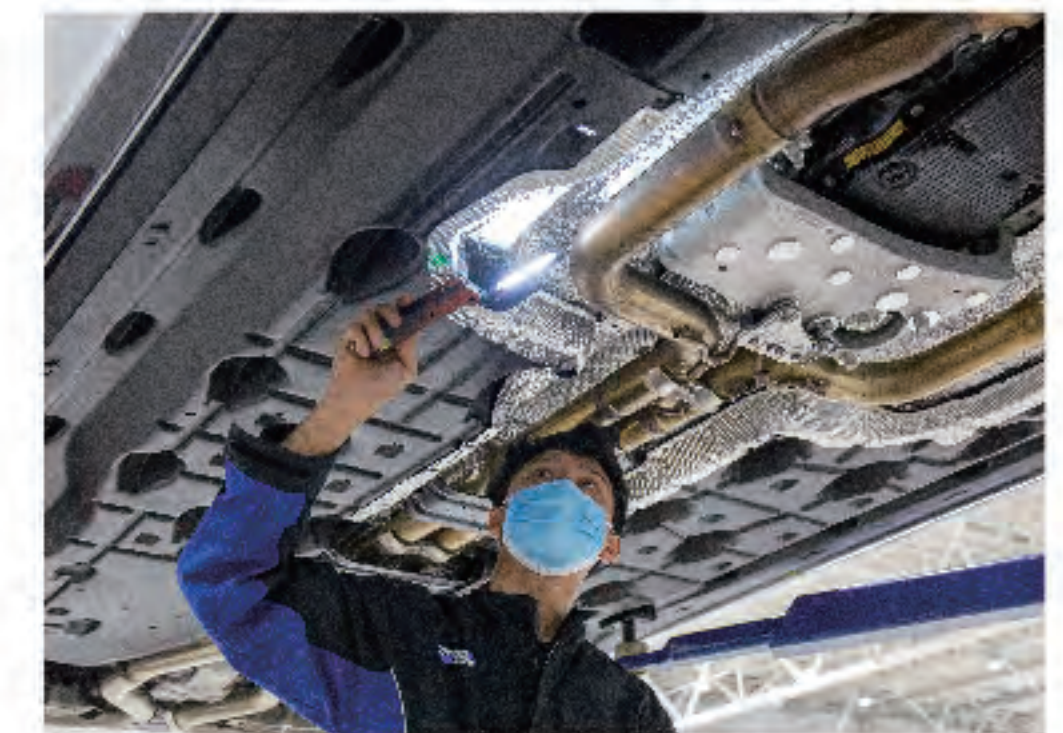
In 2018, TransWeb demonstrated its extended commitment to the PDI operations by inaugurating the new PDI Center with the state-of-art equipment and tools in Inzai City, Chiba Prefecture. The fully-fledged business operations ensure higher quality and efficiency for greater number of vehicle inspections. TransWeb spares no efforts to make our clients happier and more satisfied.



The PDI includes a number of inspections and tests.



With their hawk eyes, the experienced inspectors and technicians don't let even the tiniest defect left untreated.



Continued efforts for upgrades is the key for the success of our PDI business.